



THE SPECIALISTS FOR  
THERMOPLASTICS & ELASTOMERS

## UL LISTING NEEDED?

### **BADAMID<sup>®</sup>** UL A703 GF20-35 FR HF

- PA66 glass fibre reinforced with WEEE- and RoHS compliant flame proofing without halogens and red phosphor
- UL listing for ALL COLOURS with flame class V-0 ranging between 0.4 – 3.0 mm
- GWFI = 960 °C, GWIT = 775 °C
- f1-listing pursuant to UL 746C for outdoor applications with exposure to UV light and water
- Very good colourability, no colour limits
- Good flow properties, very well suited for thin walled parts

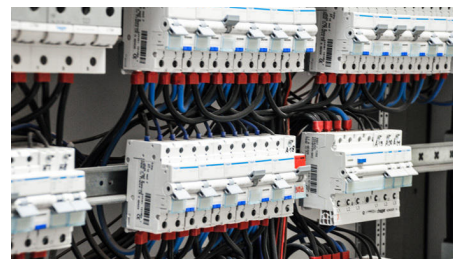
## FLAME RETARDANT COMPOUNDS FOR MOST DEMANDING APPLICATIONS

For electrical applications, no compromises are needed but sophisticated solutions. This especially applies for outdoor applications that are exposed to water and UV radiation.

The product line Badamid UL A703 GF20-35 FR HF has been developed particularly for these applications. According to our knowledge, it currently is the only product on the market with a glass fibre content of 25 or 30% that can be produced in any colour thus keeping its UL-f1 listing at 0.4 mm.

Therefore, this line of special compounds is suitable for any outdoor application that may face weathering exposure.

On the reverse side you will find a detailed listing of the types available.



► FOR QUESTIONS OF DETAIL, PLEASE CONTACT OUR APPLICATION TECHNOLOGY DEPARTMENT.



THE SPECIALISTS FOR  
THERMOPLASTICS & ELASTOMERS

# BADAMID ULA703 GF20-35 FR HF

## AVAILABLE PRODUCTS AT A GLANCE

Badamid UL A703 GF20-35 with flame class V-0 @ 0.4 mm can be provided with the following degrees of reinforcement and glow wire temperatures:

GF content	Colours	UL746C	GWFI (0.4 mm)	GWIT (1.5 mm)
20%	Black All	f1 f2	960°C 960°C	775°C 775°C
25%	All	f1	960°C	775°C
30%	All	f1	960°C	775°C
35%	White All	f1 f2	960°C 960°C	800°C 800°C

- Glass fibre contents ranging between the above-mentioned degrees of reinforcement are available on request.
- Customized colouring is no problem with our "ALL COLOURS" types

RTI VALUES  
NOW AVAILABLE

## ULA703 GF20-35 FR HF

GF content	RTI Elec	RTI Imp	RTI Str
20 - 35%	120	120	120

CUSTOMIZED MODIFICATIONS ARE AVAILABLE ON REQUEST.  
PLEASE CONTACT OUR APPLICATION TECHNOLOGY DEPARTMENT!

## BADAMID®

PA6 | PA6.6 | PA6.6/6 | PA6/6T | PPA  
PA4.6 | PA10T | PA12 | PA612 | PA610

## BADATECH HT®

HIGH-PERFORMANCE COMPOUNDS

## BADATRON®

PPS

## BADAFLEX®

TPE-S | TPU | TPE-E

## BADAPRENE®

TPV ( EPDM | PP )

## BADADUR®

PBT | BLENDS

## BADALAC®

ABS-SPECIALITIES | BLENDS

## BADAFORM®

POM

## BADALON®

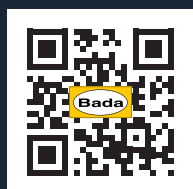
PC-SPECIALITIES | BLENDS

## BADAPROP®

PP-SPECIALITIES



EMAS  
GEPRÜFTES  
UMWELTMANAGEMENT  
DE-138-00076



Bada AG | Untere Strut 1 | 77815 Bühl/Baden | Germany  
Fon: +49 7223 94077-0 | Fax: +49 7223 94077-77 | info@bada.de

Bada Hispanoplast S.A. | Pol. Ind. Sepes | Ronda de la Industria, nº 153 | 22006 Huesca | España  
Fon: +34 974 239774 | Fax: +34 974 243969 | info@bada.com.es

www.bada.de